



THE SCHOOL BOARD OF BROWARD COUNTY, FLORIDA 2019-2020 ORGANIZATIONAL CHART

PROPOSED REVISION

School Board Appointed Committees & Public Stakeholders.....	1
Superintendent of Schools.....	2
General Counsel.....	3
School Performance & Accountability.....	4
Academics.....	5-7
Learning & Development Support.....	5
Exceptional Student Learning Support.....	6
Student Learning.....	7
Student Support Initiatives & Recovery.....	8
Auditor.....	9
Capital Programs.....	10
Financial Management.....	11
Human Resources & Equity.....	12
Information & Technology.....	13
Portfolio Services.....	14
Communications.....	15
Chief of Staff.....	16
Safety, Security & Emergency Preparedness.....	17
Strategy & Operations.....	18-20
Business Support Center, Grants Administration, Strategic Implementation & Accountability.....	18
Food & Nutrition Services, Procurement & Warehousing Services, Supplier Diversity & Outreach, Student Transportation & Fleet Services.....	19
Physical Plant Operations.....	20

FACILITIES CAPITAL PROGRAMS

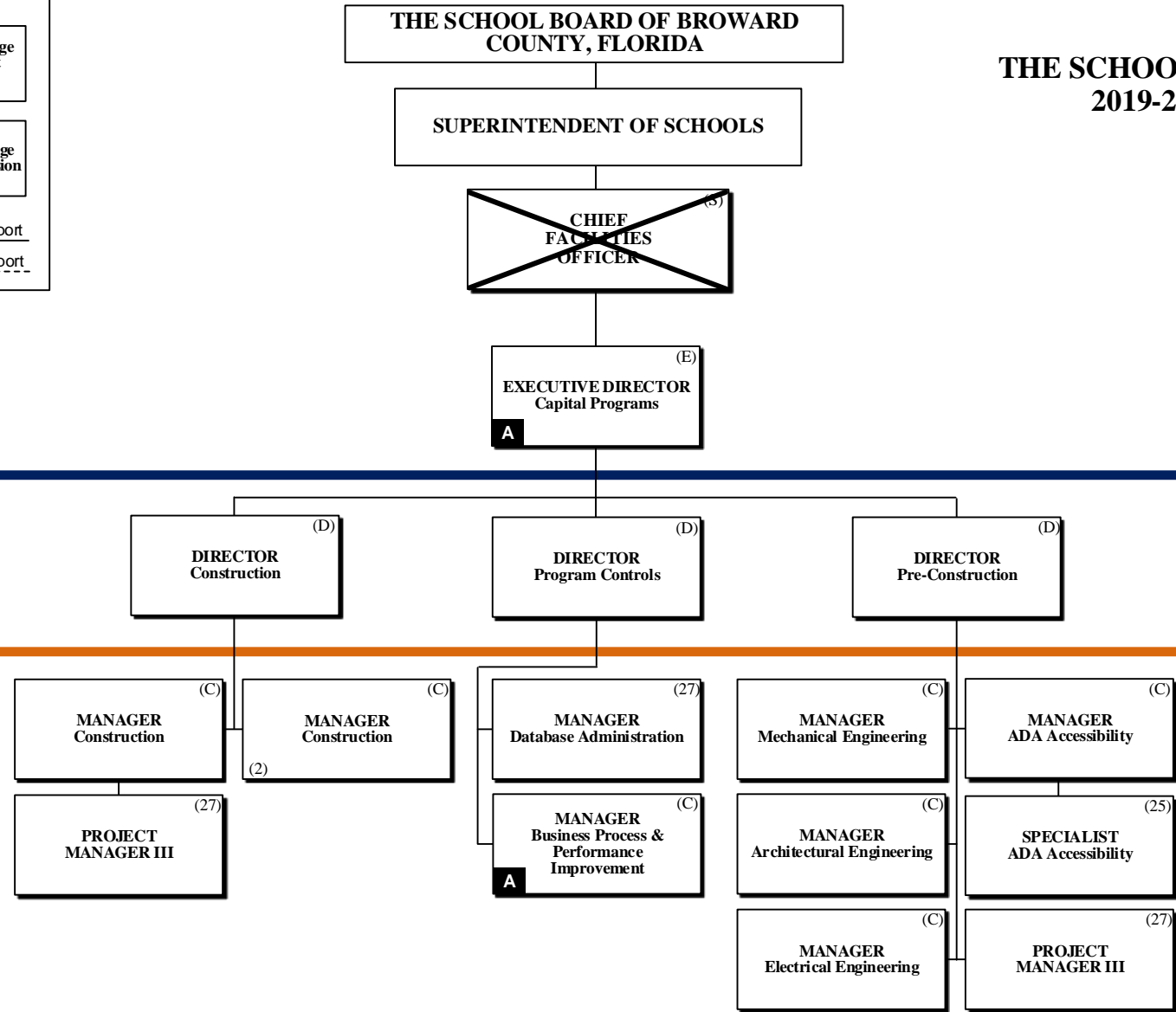


THE SCHOOL BOARD OF BROWARD COUNTY, FL
2019-2020 ORGANIZATIONAL CHART

PROPOSED REVISION

Legend

Funding from sources other than General Funds	New Position Job Description Exists N	Reporting Change from Different Division R
New Position Job Description Does Not Exist N ✓	Job Study on Existing Position J	Alignment Change within same Division A
Revision to Existing Job Description/Title Change ✓	Funding: C Capital FS Food Service <u>Direct Report</u> G General Gr Grant <u>Indirect Report</u>	



PAY BANDS 'S' & 'E'

PAY BAND 'D'

ESMAB PAY BANDS 'C' & 'B'
TSP PAY GRADES 25-28

STRATEGY & OPERATIONS

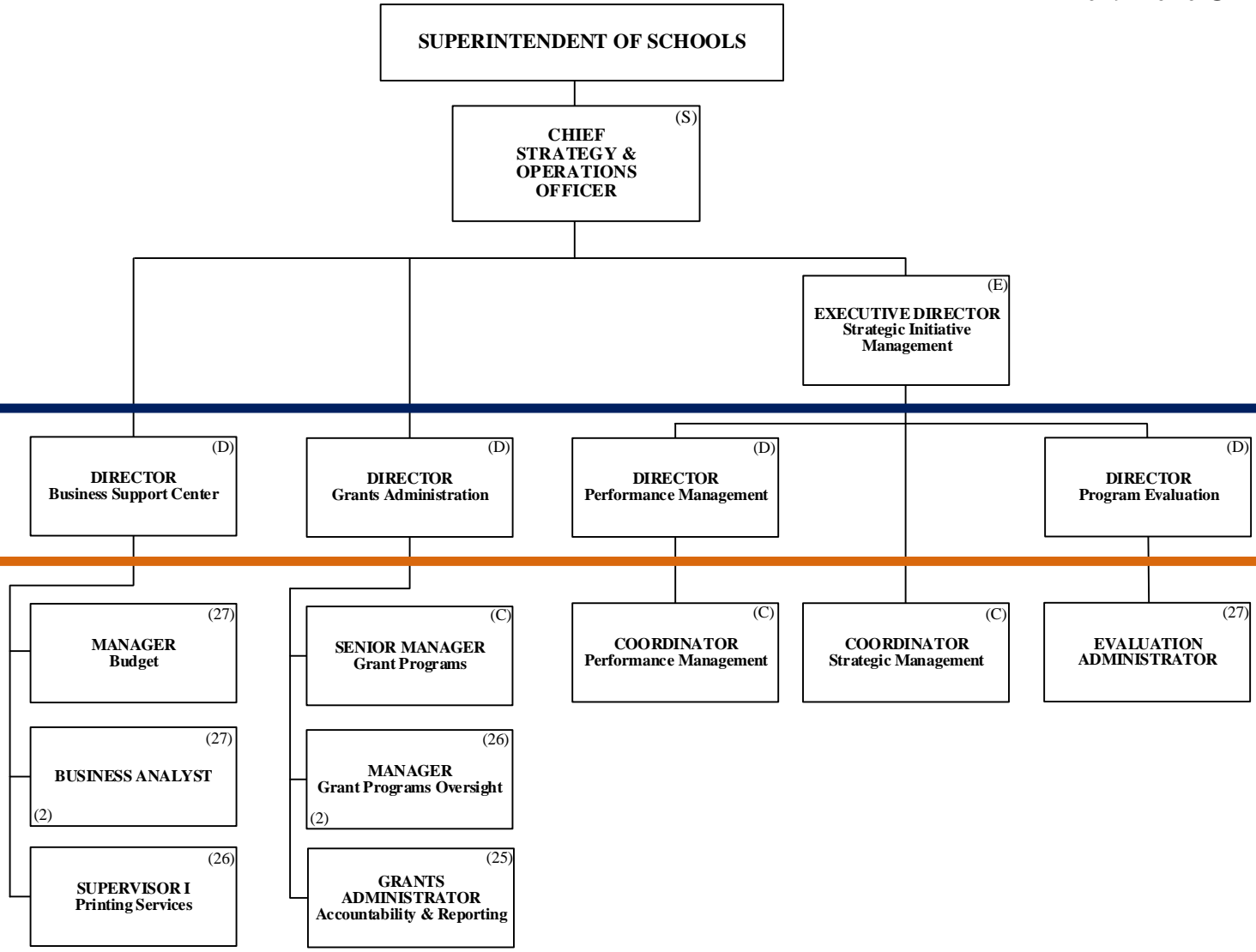


Funding from sources other than General Funds

- C** Capital **FS** Food Service
- G** General **Gr** Grant

THE SCHOOL BOARD OF BROWARD COUNTY, FLORIDA

THE SCHOOL BOARD OF BROWARD COUNTY, FL
2019-2020 ORGANIZATIONAL CHART



PAY BANDS 'S' & 'E'

PAY BAND 'D'

ESMAB PAY BANDS 'C' & 'B'
TSP PAY GRADES 25-28

Funding from sources other than General Funds

C Capital **FS** Food Service
G General **Gr** Grant

STRATEGY & OPERATIONS

THE SCHOOL BOARD OF BROWARD COUNTY, FLORIDA



THE SCHOOL BOARD OF BROWARD COUNTY, FL 2019-2020 ORGANIZATIONAL CHART

SUPERINTENDENT OF SCHOOLS

CHIEF STRATEGY & OPERATIONS OFFICER (S)

EXECUTIVE DIRECTOR Student Transportation & Fleet Services (E)

PAY BANDS 'S' & 'E'

DIRECTOR Food & Nutrition Services (D)

DIRECTOR Procurement & Warehousing Services (D)

OFFICER Economic Development & Diversity Compliance (D)
C-50% G-50%

DIRECTOR Student Transportation & Fleet Services (E, D)

PAY BAND 'D'

ASSISTANT DIRECTOR Food & Nutrition Services (C)

COORDINATOR Food & Nutrition Services (C)

ASSISTANT DIRECTOR Procurement Compliance (C)

MANAGER Warehousing Services (B)

MANAGER Supplier Diversity & Outreach Program (C)
C-50% G-50%

ASSISTANT DIRECTOR Transportation Support Services (C)

MANAGER I Transportation Terminal (B)
(2)

MANAGER I Vehicle Maintenance (C)

MANAGER Centralized Routing (C)

AREA SUPERVISOR Food & Nutrition Services (B)
(11)

FINANCE MANAGER Food & Nutrition Services (C)

MANAGER Strategic Sourcing (C)

MANAGER Construction Sourcing (C)

SENIOR PROCESS ANALYST (C)

COORDINATOR Supplier Diversity & Outreach Program (26)

MANAGER II Transportation Terminal (C)
(2)

SUPERVISOR Special Needs Transportation (25)

SUPERVISOR Vehicle Maintenance (25)
(2)

DATA ANALYST Transportation (25)

AREA SUPERVISOR Special Programs Food & Nutrition Services (B)
(2)

PROGRAM MANAGER Nutrition, Education & Training (26)

PURCHASING AGENT IV (25)

PURCHASING AGENT IV Construction (25)

SENIOR PROCESS ANALYST (C)

COORDINATOR Supplier Diversity & Outreach Program (Compliance) (26)
C-50% G-50%

ACCOUNTANT V (27)

SUPERVISOR Food & Nutrition Services Information Systems (B)

SUPERVISOR Food & Nutrition Services Equipment & Supplies (25)

PROCESS ANALYST Procurement & Warehousing Services (25)
(2)

ESMAB PAY BANDS 'C' & 'B'
TSP PAY GRADES 25-28



**THE SCHOOL BOARD OF BROWARD COUNTY, FL
2019-2020 ORGANIZATIONAL CHART**

PROPOSED REVISION

STRATEGY & OPERATIONS

**THE SCHOOL BOARD OF BROWARD
COUNTY, FLORIDA**

SUPERINTENDENT OF SCHOOLS

**CHIEF
STRATEGY &
OPERATIONS
OFFICER** (S)

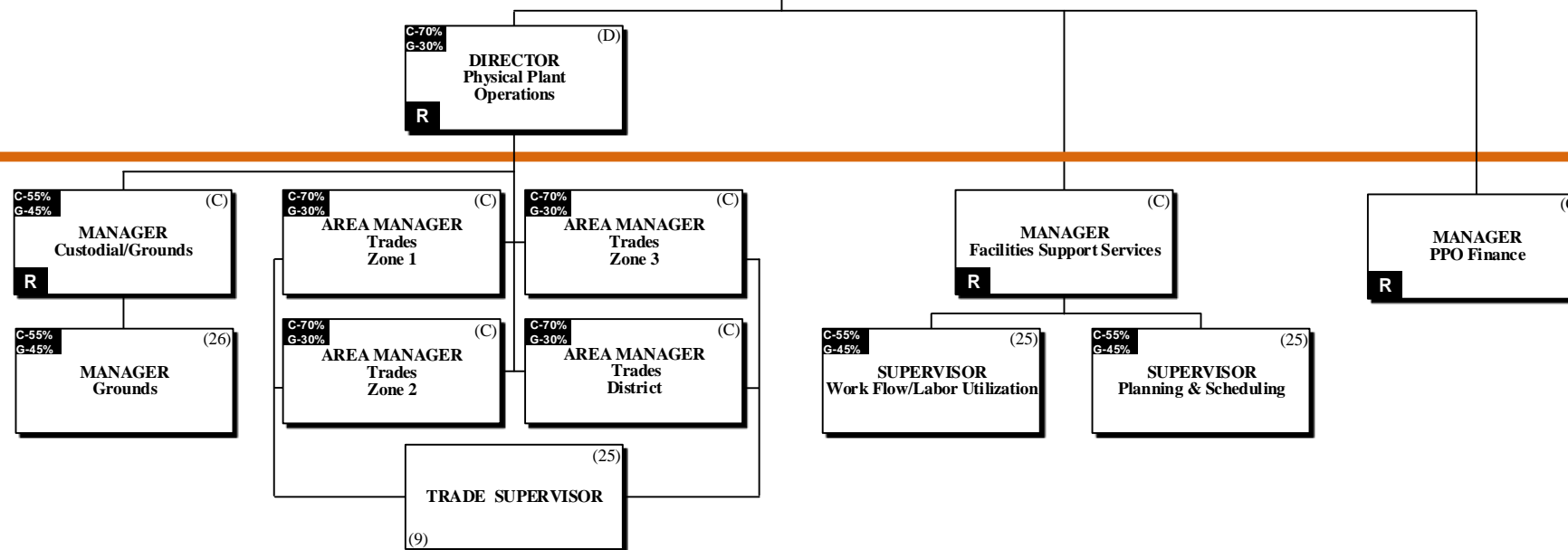
EXECUTIVE DIRECTOR (E)
Physical Plant
Operations

Legend

Funding from sources other than General Funds N	New Position Job Description Exists N	Reporting Change from Different Division R
New Position Job Description Does Not Exist N ✓	Job Study on Existing Position N	Alignment Change within same Division A
Revision to Existing Job Description/Title Change ✓	Funding: C Capital FS Food Service <u>Direct Report</u> G General Gr Grant <u>Indirect Report</u>	

PAY BANDS 'S' & 'E'

PAY BAND 'D'



ESMAB PAY BANDS 'C' & 'B'
TSP PAY GRADES 25-28